

# SPOKANE RV RESORT PHASE 3 DEER PARK, WASHINGTON, A CONDOMINIUM

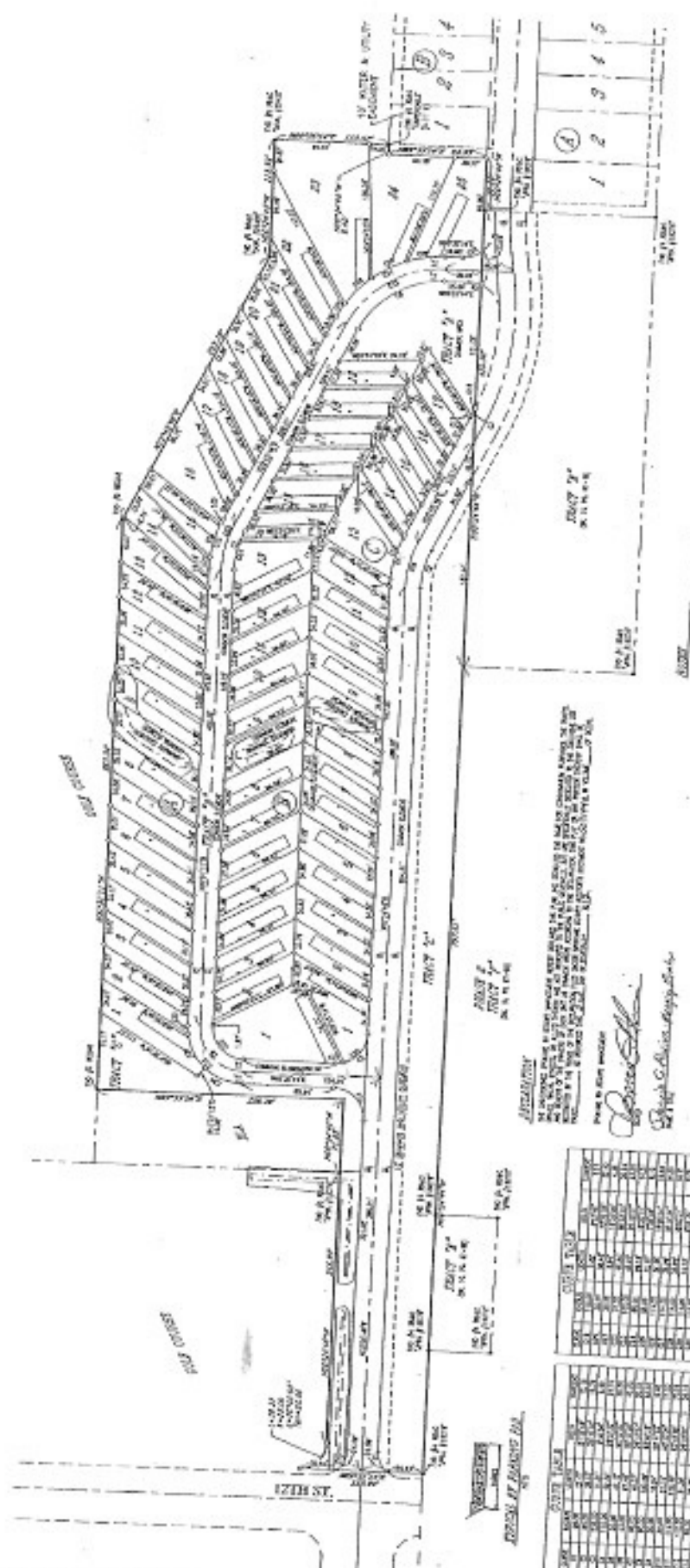
SURVEY MAP & PLANS OF SPOKANE RV RESORT AS FILED UNDER DEER PARK GOLF & COUNTRY CLUB CONDOMINIUMS IN BOOK 7 OF CONDOMINIUMS AT PAGES 8-9 UNDER A.F. NO. 4851881 & SPOKANE RV RESORT FIRST AMENDMENT A.F. 5862210 EK. 10, PG. 87-88, A PORTION OF W1/2 OF SECTION 36, T29N, R42E, W.M. CITY OF DEER PARK, SPOKANE COUNTY, WASHINGTON



**SPOKANE COUNTY SURVEYOR**  
 I, James C. Anderson, Surveyor, do hereby certify that the above described plat is a true and correct copy of the original as filed in my office.

**SPOKANE COUNTY ENGINEER**  
 I, James C. Anderson, Engineer, do hereby certify that the above described plat is a true and correct copy of the original as filed in my office.

**STATE OF WASHINGTON**  
 I, James C. Anderson, State Engineer, do hereby certify that the above described plat is a true and correct copy of the original as filed in my office.



TRACT	AREA (AC)	PERCENTAGE	REMARKS
TRACT 1	1.23	100%	AS SHOWN ON PLAT
TRACT 2	1.23	100%	AS SHOWN ON PLAT
TRACT 3	1.23	100%	AS SHOWN ON PLAT
TRACT 4	1.23	100%	AS SHOWN ON PLAT
TRACT 5	1.23	100%	AS SHOWN ON PLAT
TRACT 6	1.23	100%	AS SHOWN ON PLAT
TRACT 7	1.23	100%	AS SHOWN ON PLAT
TRACT 8	1.23	100%	AS SHOWN ON PLAT

**ASSURANCE**  
 I, James C. Anderson, Surveyor, do hereby certify that the above described plat is a true and correct copy of the original as filed in my office.

**ASSURANCE**  
 I, James C. Anderson, Engineer, do hereby certify that the above described plat is a true and correct copy of the original as filed in my office.

**ASSURANCE**  
 I, James C. Anderson, State Engineer, do hereby certify that the above described plat is a true and correct copy of the original as filed in my office.

**SPokane RV Resort**  
 114 20th Ave. Spokane, WA 99201  
 (509) 325-1111

**James C. Anderson**  
 Surveyor & Engineer  
 114 20th Ave. Spokane, WA 99201  
 (509) 325-1111

**Spokane RV Resort**  
 114 20th Ave. Spokane, WA 99201  
 (509) 325-1111

**ASSURANCE**  
 I, James C. Anderson, Surveyor, do hereby certify that the above described plat is a true and correct copy of the original as filed in my office.

**ASSURANCE**  
 I, James C. Anderson, Engineer, do hereby certify that the above described plat is a true and correct copy of the original as filed in my office.

**ASSURANCE**  
 I, James C. Anderson, State Engineer, do hereby certify that the above described plat is a true and correct copy of the original as filed in my office.

**ASSURANCE**  
 I, James C. Anderson, Surveyor, do hereby certify that the above described plat is a true and correct copy of the original as filed in my office.

**ASSURANCE**  
 I, James C. Anderson, Engineer, do hereby certify that the above described plat is a true and correct copy of the original as filed in my office.

**ASSURANCE**  
 I, James C. Anderson, State Engineer, do hereby certify that the above described plat is a true and correct copy of the original as filed in my office.

**ASSURANCE**  
 I, James C. Anderson, Surveyor, do hereby certify that the above described plat is a true and correct copy of the original as filed in my office.

**ASSURANCE**  
 I, James C. Anderson, Engineer, do hereby certify that the above described plat is a true and correct copy of the original as filed in my office.

**ASSURANCE**  
 I, James C. Anderson, State Engineer, do hereby certify that the above described plat is a true and correct copy of the original as filed in my office.